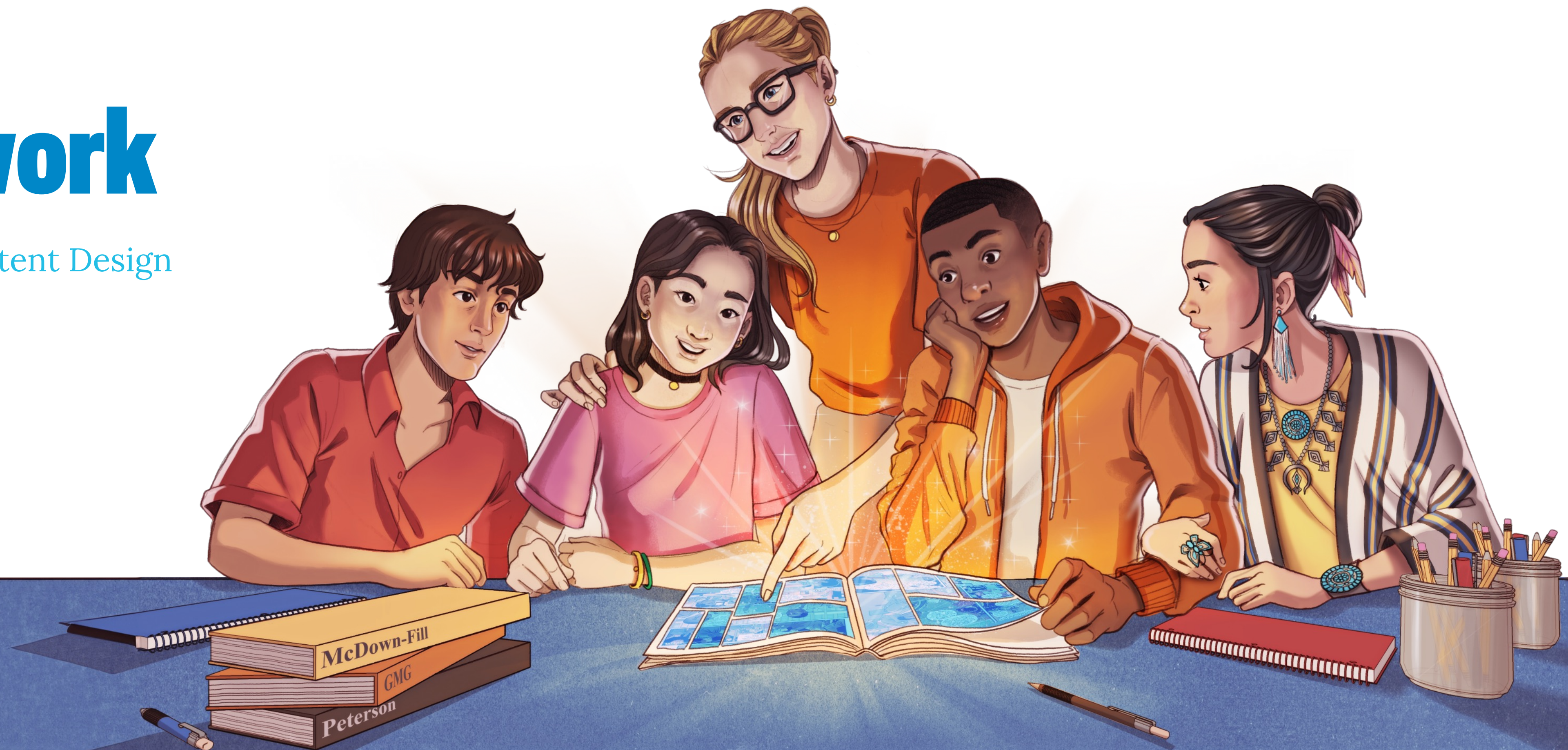


TRUE *Fiktion*

Agency Framework

Our Approach to Content Design



TRUE

Fiktion

Agency Framework

At the heart of our mission lies a profound belief in the power of student agency — the capacity for every student to actively shape their own destiny. We firmly assert that true agency blossoms when students find themselves genuinely reflected in their education. Without this connection, engagement wanes, and the potential for agency remains untapped. It's a simple equation: representation in education fuels engagement, and engagement is the key to agency. Our content design philosophy drives students to examples of everyday people exerting agency throughout U.S. history. If students are exposed to people from their cultural background exerting agency throughout history, they will be better equipped to exert agency in their own lives.

$$A = G + R + R$$

Agency

Gap

We start with gaps in general history knowledge. We pick stories that you would not find in a textbook but are essential to the formation of American society. We tell the "I can't believe I didn't know that!" stories in a way a textbook never could. We believe that filling in the gaps in our society's history lessons is the first step in fighting the battle against misinformation and systemic racism. Addressing these gaps through culturally responsive pedagogy helps foster a sense of belonging for all students.

Resilience

Every story we tell highlights the resilience of marginalized communities. It is essential to highlight traumatic moments in history, but we also must look past those moments to see how communities have endured. Textbooks often focus only on the trauma but and overlook the healing that occurred. Marginalized communities continue to fight for their place in humanity, and everyone should know that. Our approach applies social-emotional learning principles to help students glean interpersonal skills from historical examples of resilience.

Relevance

History education should be relevant. We choose stories that help us know what historical events contribute to current social issues. Every social problem we face today started somewhere in the past, and we want to help students and teachers understand what got us here so we can think about how we can move forward. We incorporate systems thinking in our content to explore how systems evolve over time and how people exhibit agency in navigating these changes.